





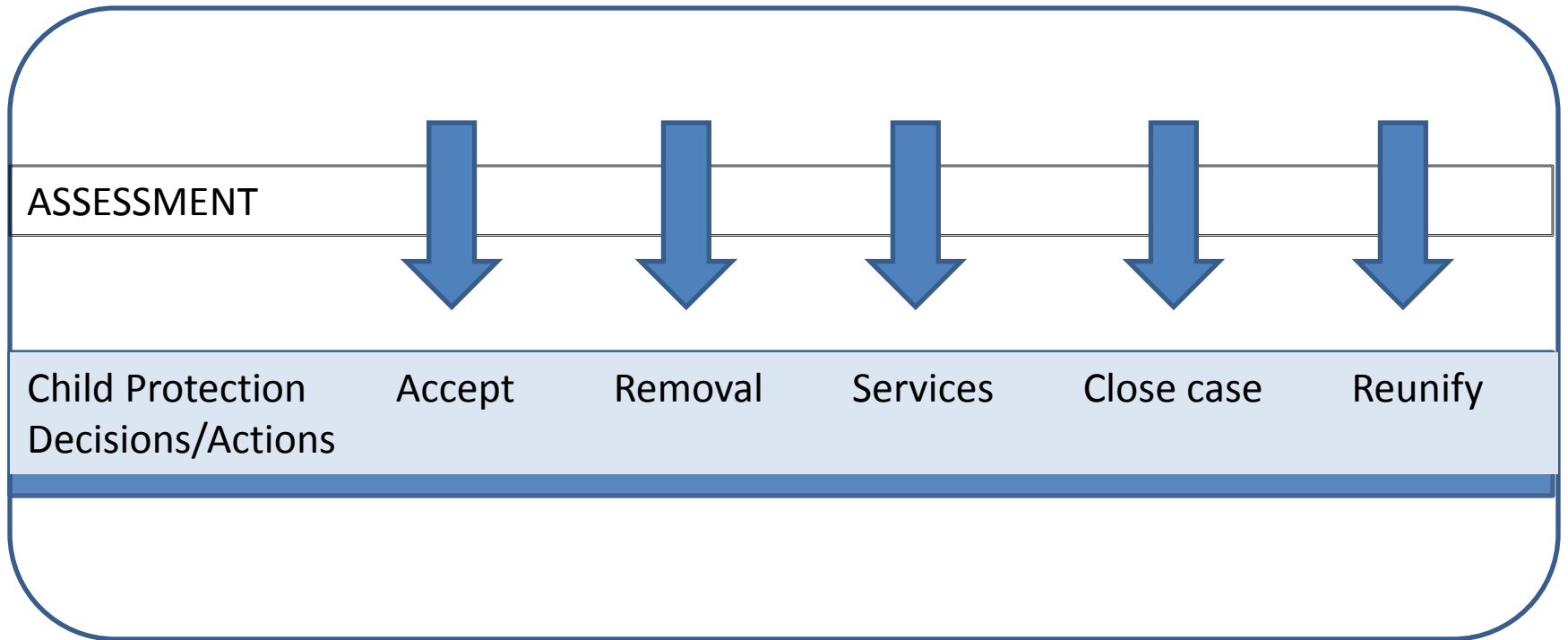
2012 December

Sun Mon Tue Wed Thu Fri Sat

25	26	27	28	29	30	1
2	3	4	5	6	7	8
9	10	11	12	13	14	15
16	17	18	19	20	21	22
23	24	25	26	27	28	29
30	31	1	2	3	4	5

ASSESSMENT	NUMBER AS OF AUGUST 5th
SDM Safety Assessment	36,693
SDM Risk Assessment	36,611
SDM Risk ReAssessment	1,542

Continuum of Intervention

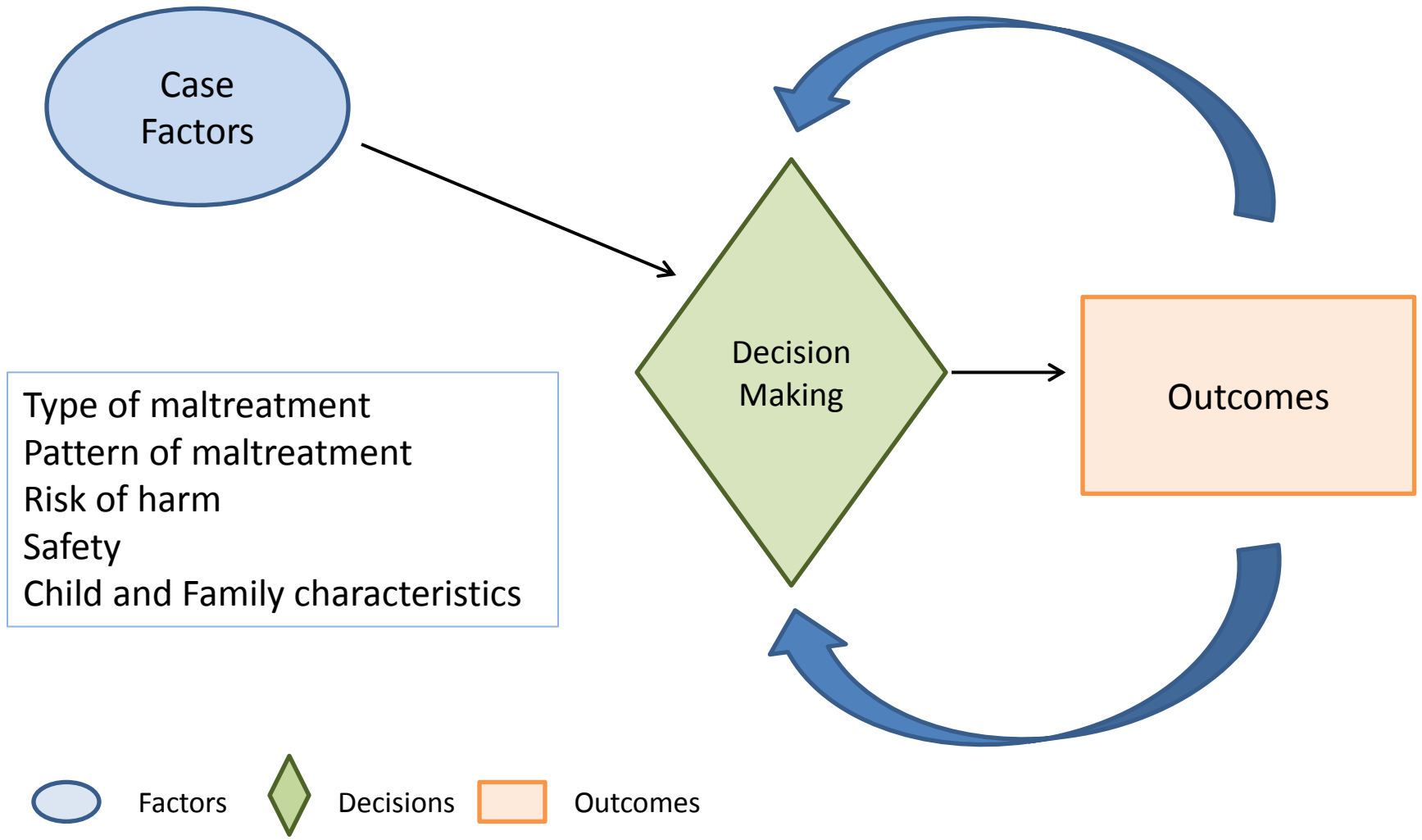


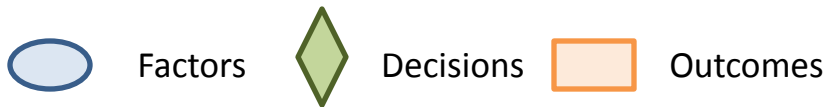
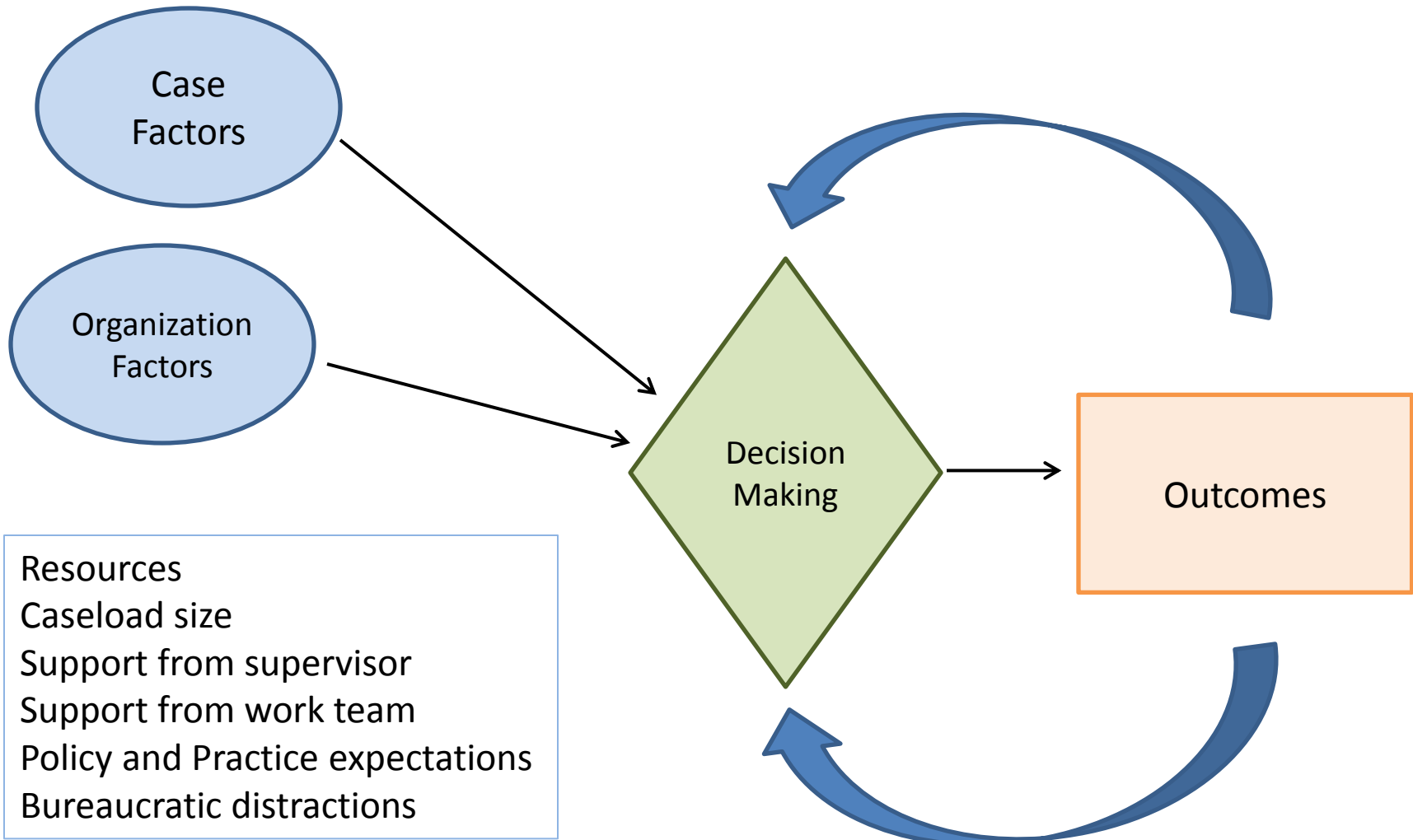


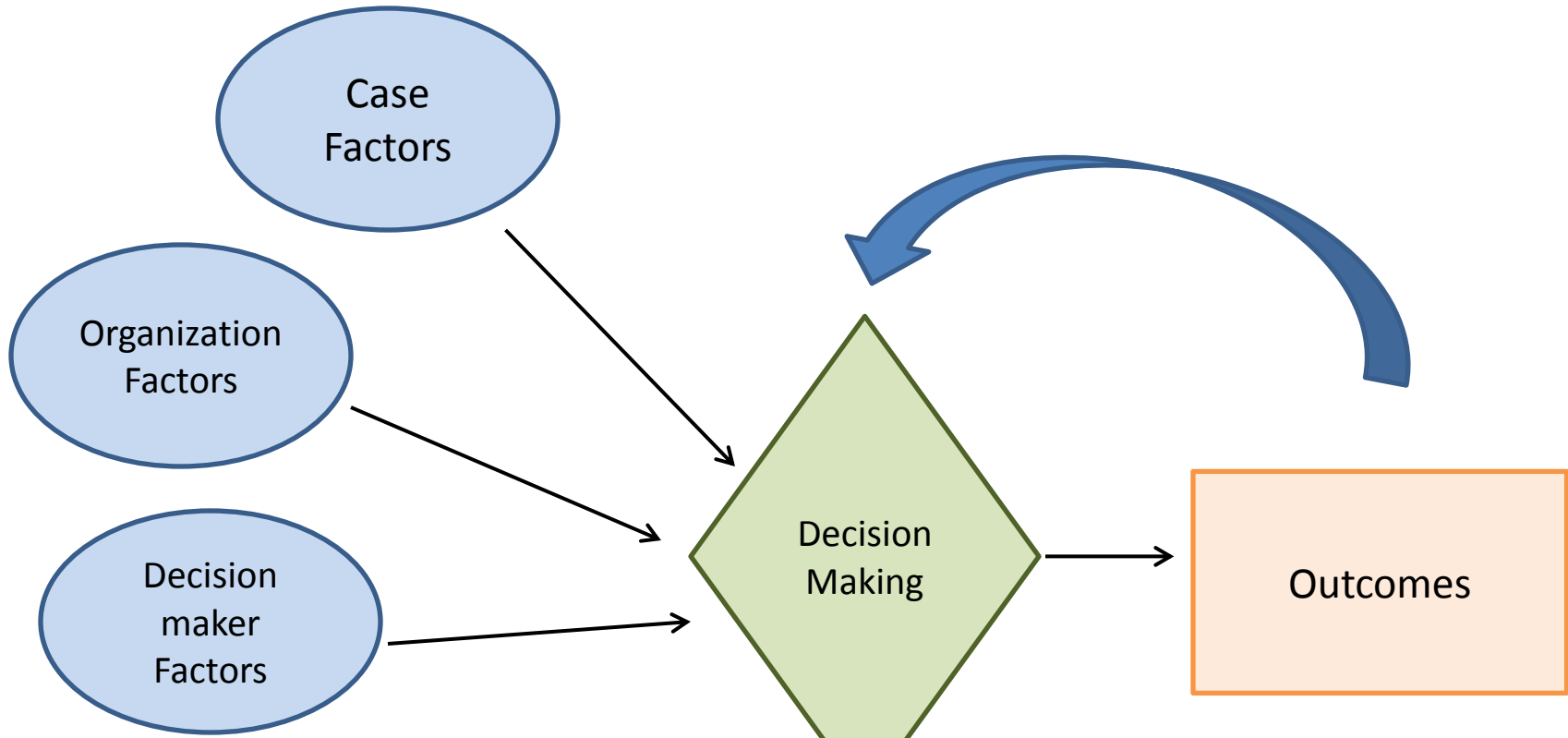
Threshold Shift and Decision Making

Organization and External Factors

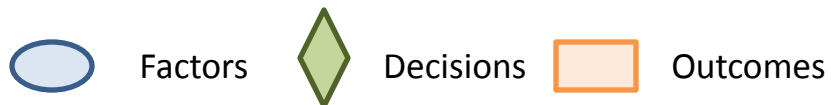




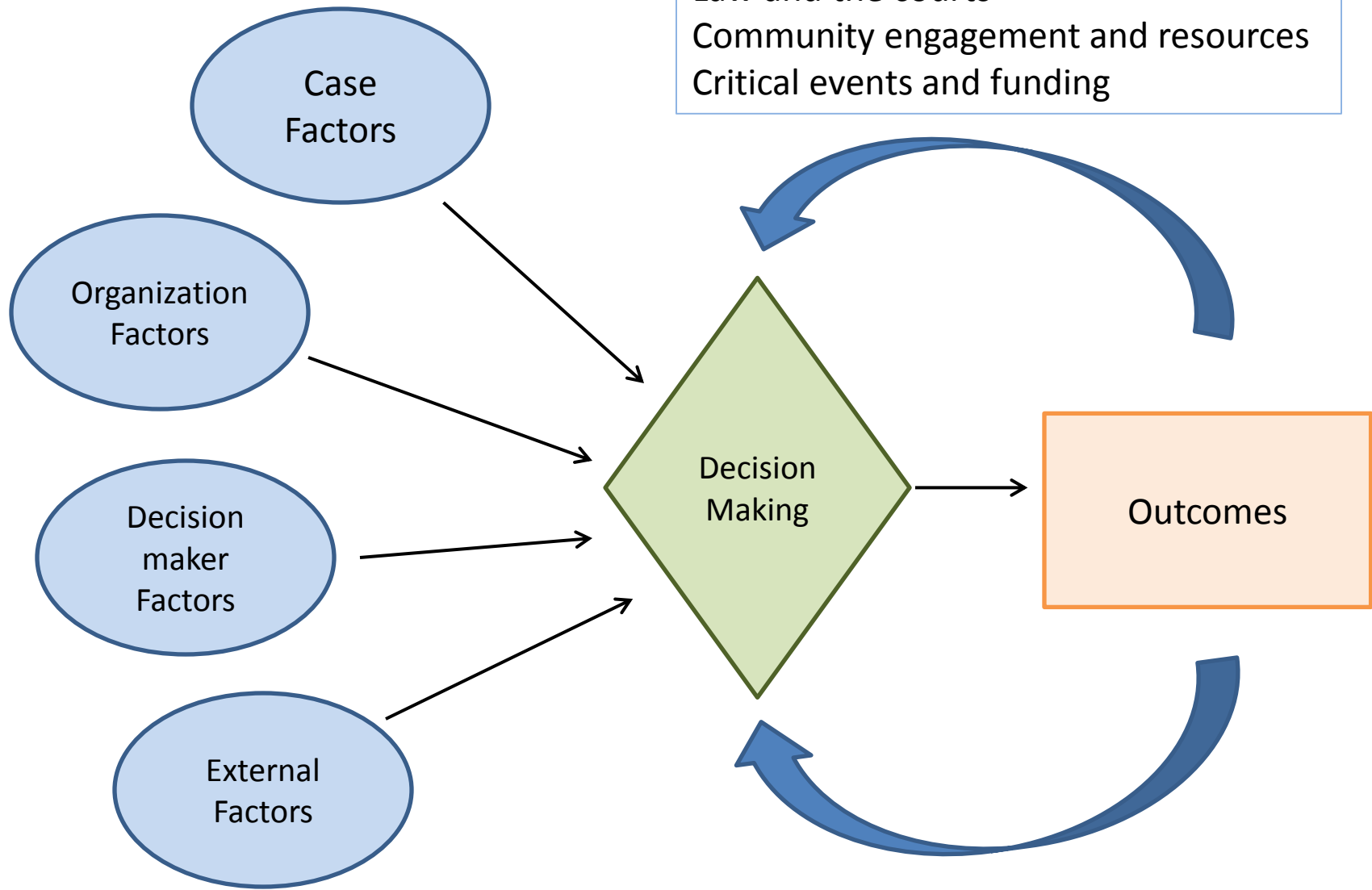




Past experiences
Skills
Values
Comfort with casework
Orientation – protection or preservation?



Law and the courts
Community engagement and resources
Critical events and funding



○ Factors ◇ Decisions □ Outcomes

Assessing the situation

Deciding what to do about it

HIGH
Level of Concern



Assessment



LOW
Level of Concern

Assessing the situation

Deciding what to do about it

HIGH
Level of Concern



Assessment



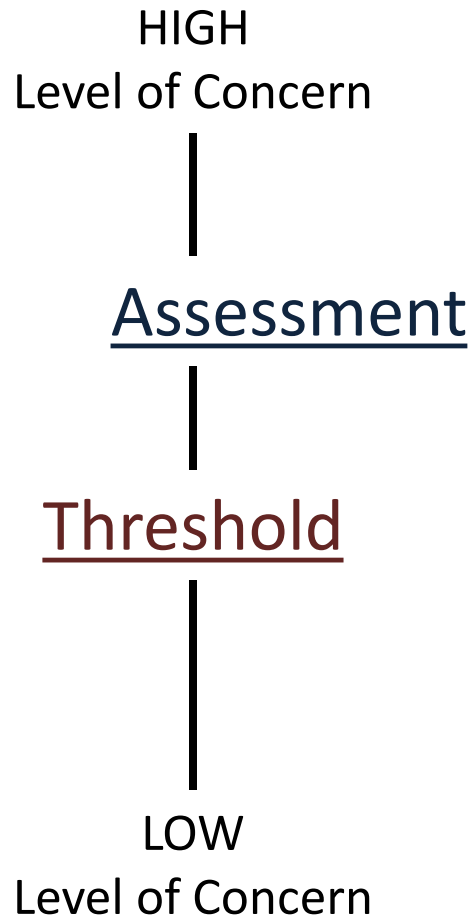
Threshold



LOW
Level of Concern

Assessing the situation

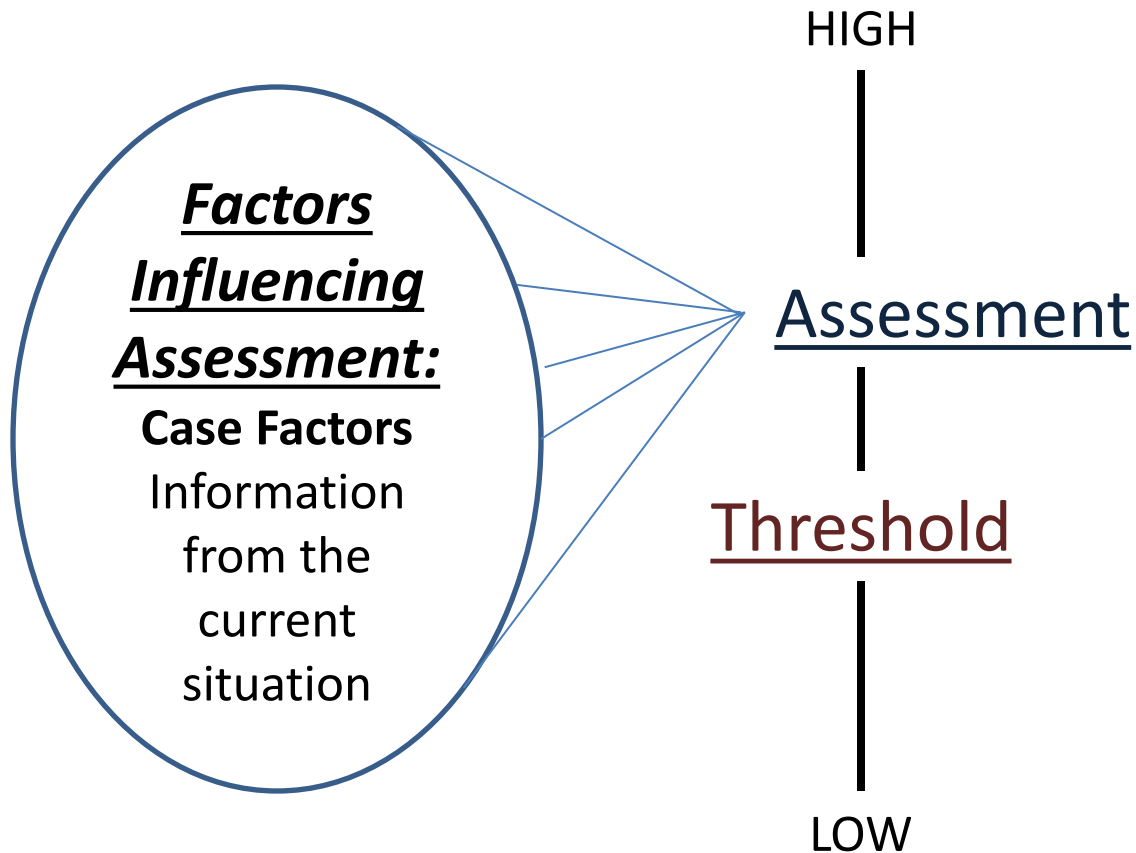
Deciding what to do about it



If **Assessment** is *BELOW* the **Threshold**, then NO ACTION is taken
If the **Assessment** is *ABOVE* the **Threshold**, then ACTION is taken.

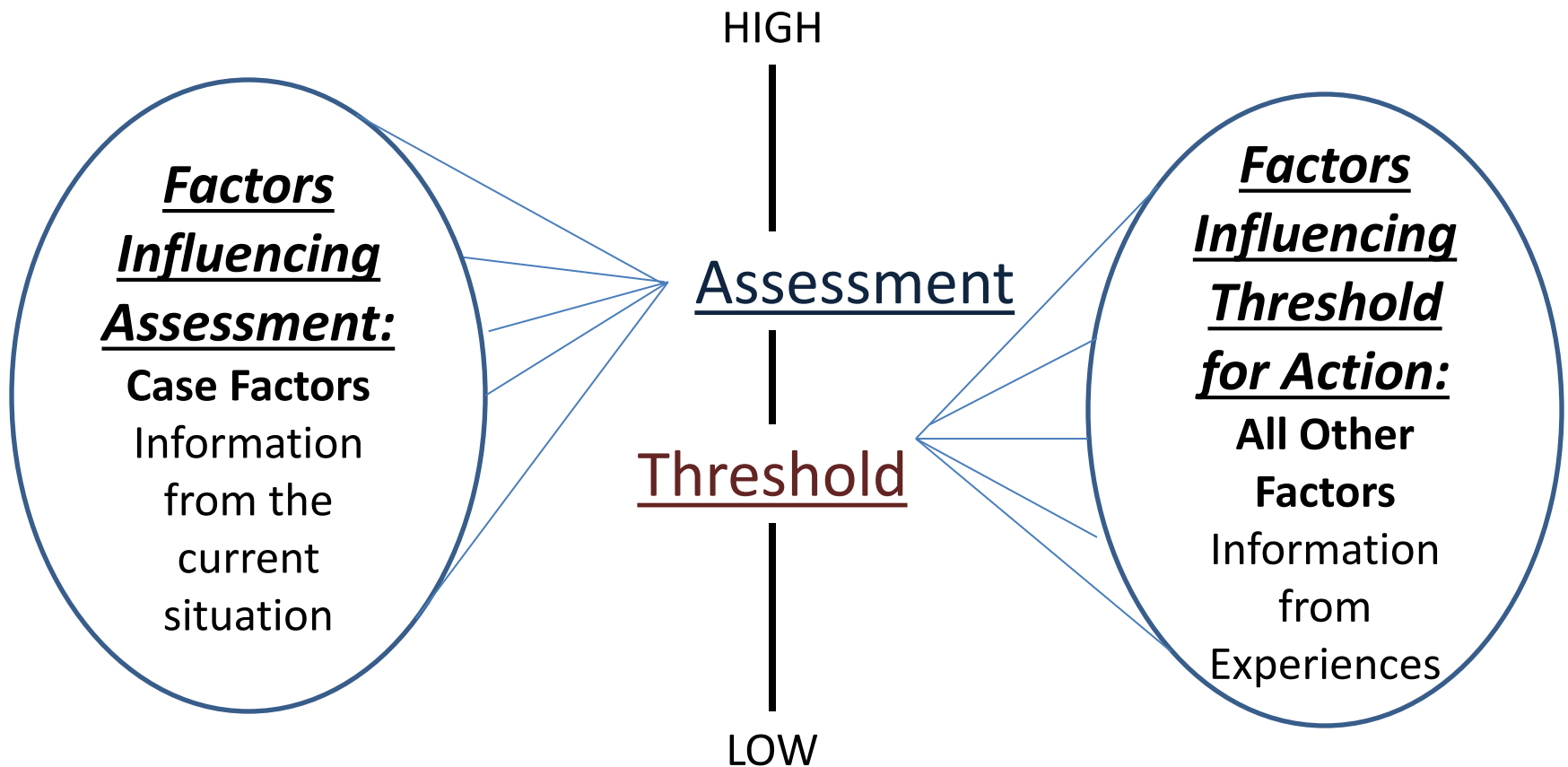
Assessing the situation

Deciding what to do about it

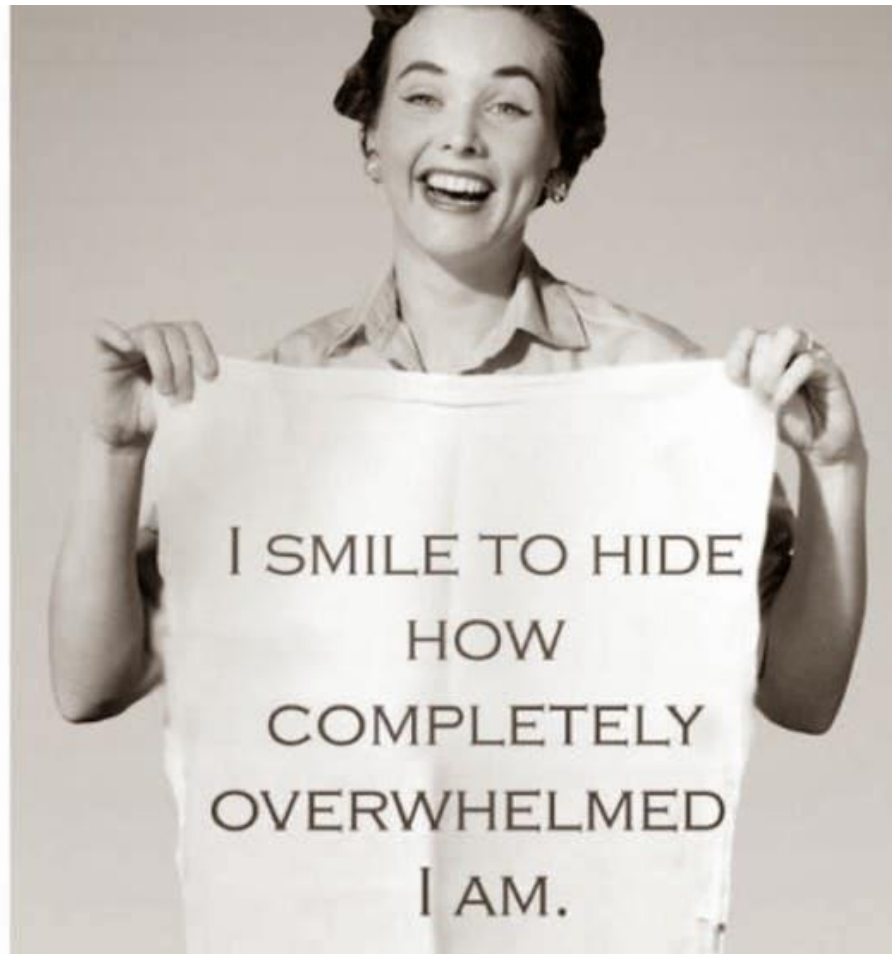


Assessing the situation

Deciding what to do about it



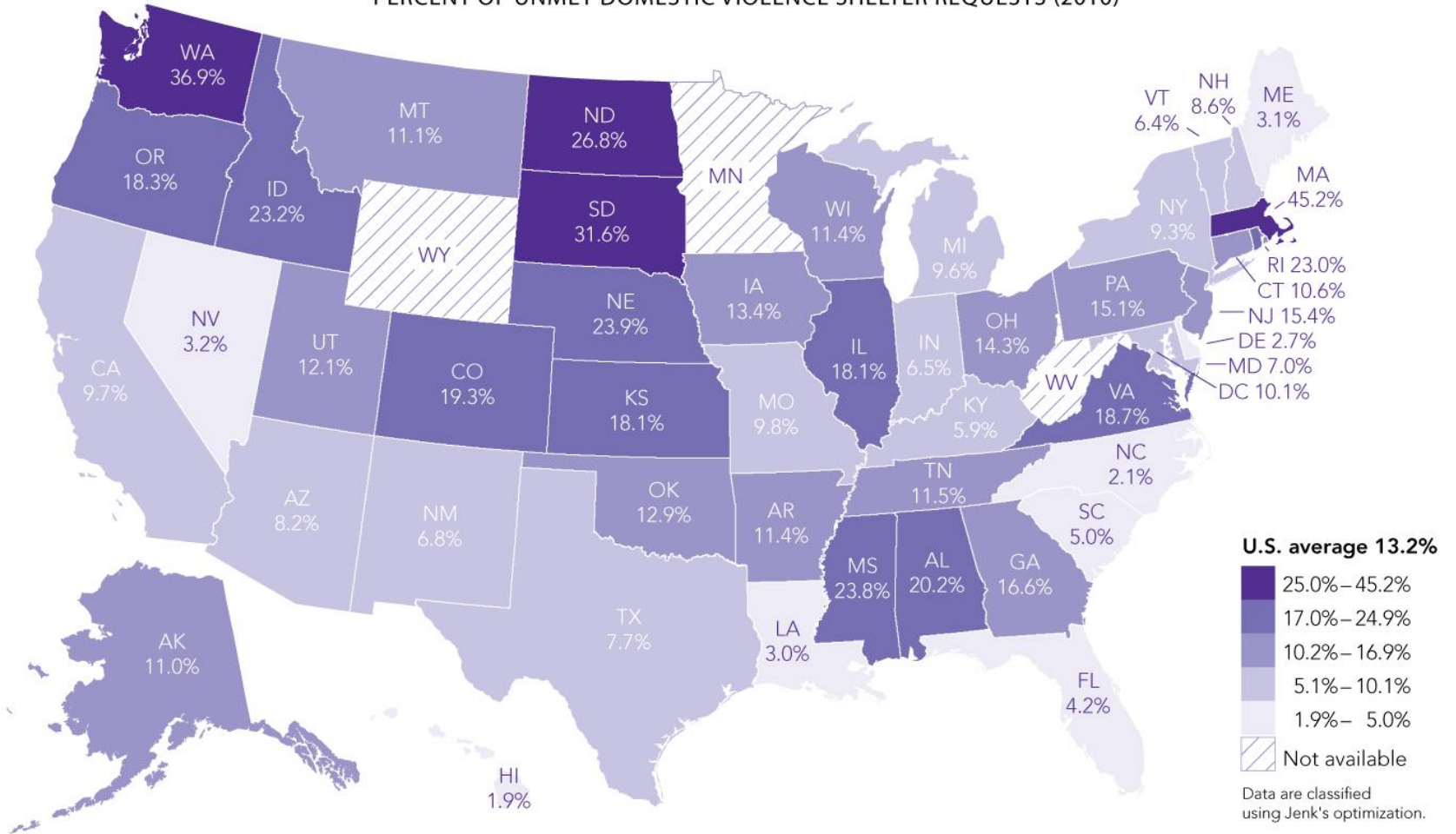
Organizational Factors



External Factors

Map 3

PERCENT OF UNMET DOMESTIC VIOLENCE SHELTER REQUESTS (2010)



Acknowledge

- Values are not always shared
- Personal biases effect thresholds
- Thresholds can cause two different workers who agree on the assessment results to make two very different decisions
- There are both personal values and biases and organizational and community values and biases – both need to be considered

